



Aon International Student Insurance

Studying and internships abroad

Complete
Insurance
package

aonstudentinsurance.com



Are you going to study abroad?

Studying abroad means you will face a new culture with different customs and habits. Before embarking on a new adventure you need to arrange certain practical matters. Find living accommodation, arrange a visa and last but not least, conclude an insurance that will give you peace of mind during your stay abroad.

Aon Student Insurance

Our high quality service consists of an insurance package with excellent coverage worldwide, a personal online account for your insurance needs and a multilingual customer service.

Applying for the right insurance can be tricky, because you need to comply with local law and regulations. Your university might also have additional insurance requirements.

Aon Student Insurance provides you with the right insurance advice for your situation and is accepted by hundreds of universities and many immigration authorities.

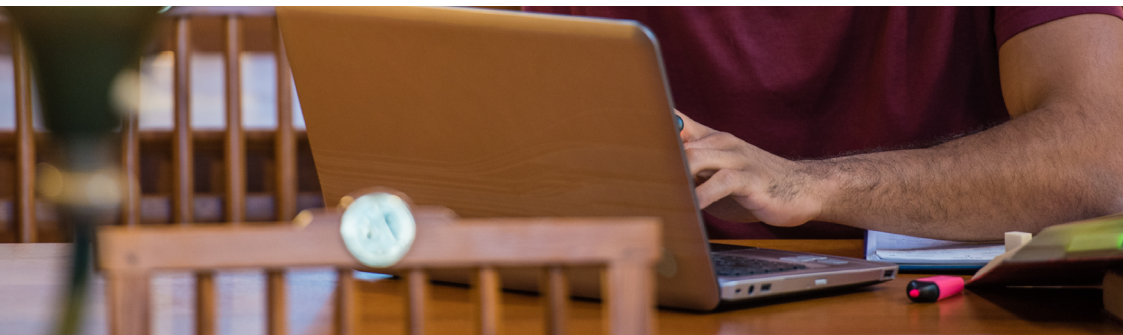
Which insurance do you need?

| Situation | Needed coverage |
|--|------------------------|
| Non-EEA* Student | Aon Complete Insurance |
| EEA* Student without EHIC** | Aon Complete Insurance |
| EEA* Student with EHIC** | Aon Start+ Insurance |
| Erasmus+ Exchange or Internship with EHIC** | Start+ Insurance |
| Erasmus+ Exchange or Internship without EHIC** | Aon Complete Insurance |

*EEA = European Economic Area (EU countries, Iceland, Norway and Liechtenstein)

** EHIC = European Health Insurance Card

www.aonstudentinsurance.com



Summary of cover

| Coverage | Complete | Start+ | Start |
|---|--|--|--|
| Medical expenses | Actual costs (excluding pre-existing conditions) | Supplementary to the EHIC (excluding pre-existing conditions) | No coverage |
| Urgent dental treatment | EUR 350 per year | EUR 350 per year | No coverage |
| Dental costs in the event of an accident | EUR 1.250 per year | EUR 1.250 per year | No coverage |
| Emergency assistance (24/7) and repatriation | EUR 500.000 (Max. per insured period) | EUR 500.000 (Max. per insured period) | EUR 500.000 (Max. per insured period) |
| Extra travel costs for the insured in case of death or life-threatening illness of family member in 1st or 2nd degree | EUR 7.000 | EUR 7.000 | EUR 7.000 |
| Private Liability | EUR 1.250.000 (max. per insured event) Including internships (max. EUR 10.000) | EUR 1.250.000 (max. per insured event) Including internships (max. EUR 10.000) | EUR 1.250.000 (max. per insured event) Including internships (max. EUR 10.000) |
| Baggage during journey - Electronical equipment - Telecom equipment - Contact lenses and glasses - Travel documents | EUR 2.000 EUR 1.000 EUR 250 EUR 250 Actual costs | EUR 2.000 EUR 1.000 EUR 250 EUR 250 Actual costs | EUR 2.000 EUR 1.000 EUR 250 EUR 250 Actual costs |
| Personal items in your home | EUR 6.000 | EUR 6.000 | EUR 6.000 |
| Accidents - Accidental death - Permanent disablement | EUR 10.000 EUR 75.000 | EUR 10.000 EUR 75.000 | EUR 10.000 EUR 75.000 |
| Legal Assistance - Inside Europe - Outside Europe | EUR 50.000 EUR 15.000 | EUR 50.000 EUR 15.000 | EUR 50.000 EUR 15.000 |
| Premium | EUR 1,38 per day EUR 41,40 per month | EUR 0,88 per day EUR 26,40 per month | EUR 0,56 per day EUR 16,80 per month |
| Premium Non-Student* (researchers, teachers, partners/children) | EUR 2,10 per day EUR 63,00 per month | | |

* Complete coverage. This means that pre-existing medical conditions are excluded from coverage.

Unique benefits

- Worldwide coverage
- 24/7 Emergency Assistance
- No deductibles or co-payments
- Online account to manage your personal details and insurance
- Fully compliant with Schengen visa regulations
- Fully compliant with the Erasmus+ Exchange Program and Internships abroad



Apply online

To apply for this insurance, please go to www.aonstudentinsurance.com

Payment

You can pay monthly, yearly or at once. Payment methods are bank transfer, direct debit or credit card (MasterCard/VISA).

Questions?

Visit the FAQ section on our website, call us on **+31(0)10 448 8270** or email us at info@aonstudentinsurance.com.

Aon Student Insurance

Our dedicated and multilingual customer service offers assistance to thousands of international students. We communicate with international students every day. With our knowledge and experience with universities and international students, we know what is considered important in an insurance plan for international students.

About Aon

Aon plc (NYSE: AON) exists to shape decisions for the better—to protect and enrich the lives of people around the world. Our colleagues provide our clients in over 120 countries with advice and solutions that give them the clarity and confidence to make better decisions to protect and grow their business.

©2022 Aon plc. All rights reserved.

The information contained herein and the statements expressed are of a general nature and are not intended to address the circumstances of any particular individual or entity. Although we endeavor to provide accurate and timely information and use sources we consider reliable, there can be no guarantee that such information is accurate as of the date it is received or that it will continue to be accurate in the future. No one should act on such information without appropriate professional advice after a thorough examination of the particular situation.